



2 Sumner Street BRUNSWICK EAST VIC

4 1 4

Recently refurbished and set in a quiet street, this very well presented period Classic has it all. Situated on 465sqm and close to Nth Fitzroy, this double fronted Californian Bungalow is a well-kept family residence. Relax indoors with family in comfort or entertain friends in your private paved garden and back yard.

Type : House

Price : \$ 940

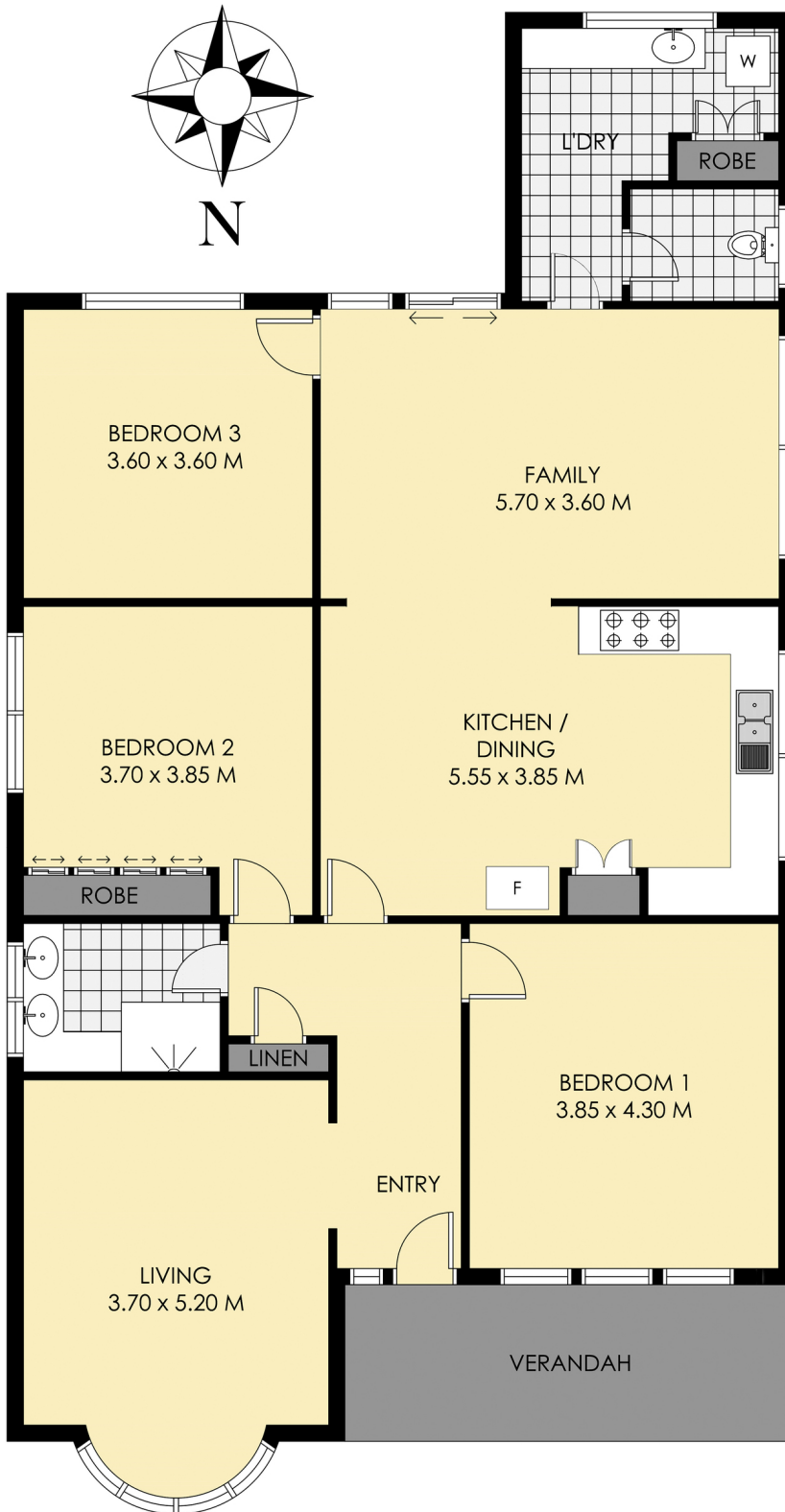
View : <https://www.hollandprice.com.au/lease/vic/north/brunswick-east/residential/house/4377902>

- ? Flexible floor plan, 4th bed or 2nd living room
- ? Central Bathroom
- ? Large open plan living
- ? Option to keep office/study at rear or restore to garage
- ? Large Entertainers Paved backyard
- ? Polished Baltic pine boards, Lead prism windows & high ceilings
- ? Ornate detail & character throughout



Robert Sordello
9384 0022

[For full version visit the website](https://www.hollandprice.com.au)



2 Sumner Street Brunswick East

Whilst every attempt has been made to ensure the accuracy of the floor plan contained here, measurements of doors, windows, rooms and any other items are approximate and no responsibility is taken for any error, omission, or mis-statement. This plan is for illustrative purposes only and should be used as such by any prospective purchaser. The services, systems and appliances shown have not been tested and no guarantee as to their operability or efficiency can be given